

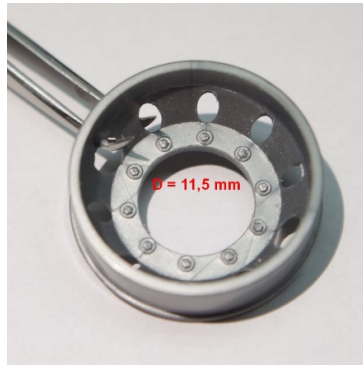
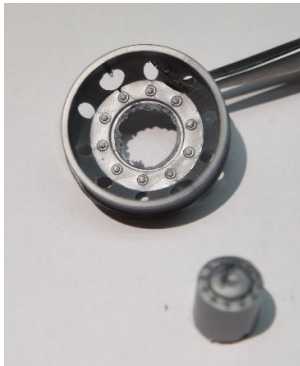


Rear axle hub IVECO Stralis

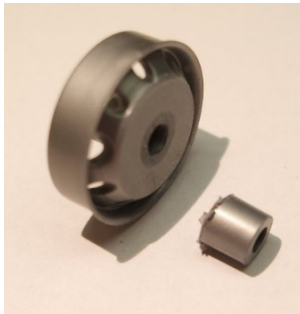
The entire Stralis range (6x2, 6x4 alike) features that hub at the rear axle. As part of the axle, its color is identically with the color of the chassis. By default RAL 7021 black-grey.

The conversion kit is suitable for all Stralis kits from Italeri Italeri (#3869, #3898, #3899) and Revell #7423 (= Italeri #3869), and variants known so far.

Tutorial for exchanging the kit rims and axle components by genuine hubs:

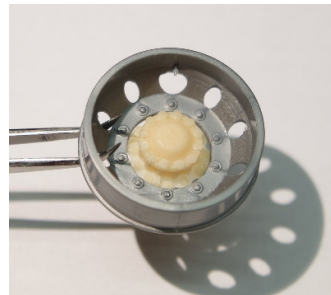
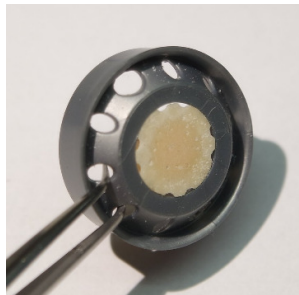
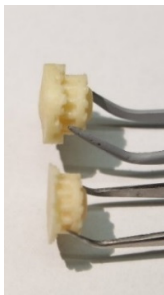


The **outer planetary hubs** have to be removed completely and the rim's whole has to be drilled up to 11,5 mm. It's not required, to change or remove the nuts & bolts from the kit. However, you may exchange them by more detailed ones; in this case consider the wrench size of 22 mm which results into ca. 1 mm in 1/24.



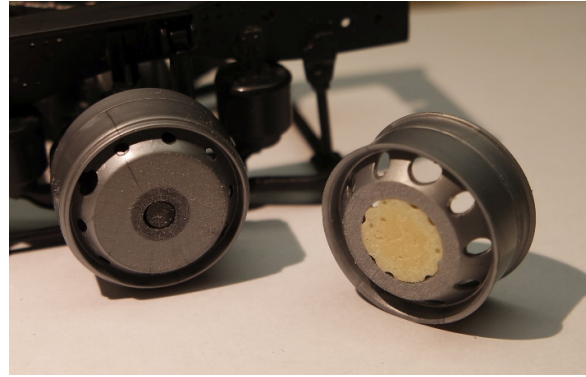
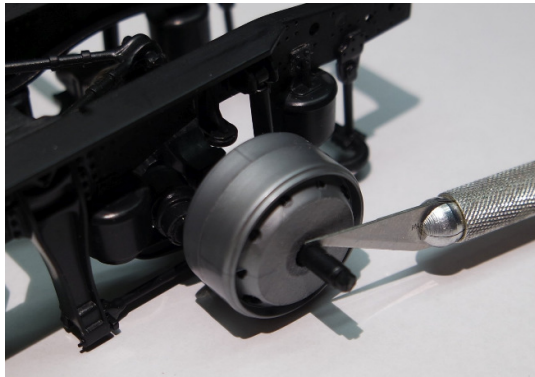
At the **inner rim** remove the cylinder completely and flatten the surface. For that reason the axle parts have to be cut also, but later on. Consider, that due to this modification the axle does not provide movable wheels any more.

Now take the resin hub and burnish the bottom as flat as possible. This is important to ensure the genuine design: the hub should be placed little deeper than the rim, s. pictures.



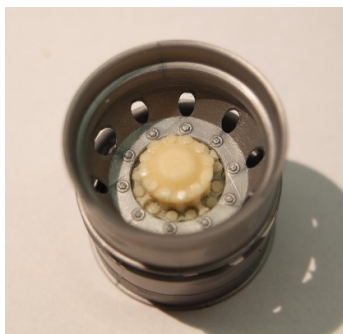
Now both rims are prepared for the axle, which now has to be cut:

1. Make sure, that the axle is mounted completely. Especially the brake discs have to be mounted at this point of time, otherwise it's more difficult to determine the correct length.
2. Now snap on the inner rim (no glue) and cut the surplus length. Now the transformed rims can be mounted to the chassis.



Now both rims should be glued centrally (left picture below). The hub comes either next or omit it for the moment, if rims and hub should get different colours.

Basically the hubs should have the same color like the chassis (not like the rims). But if the hubs shall get the identical color as the rims, you can mount them already now by using superglue (standard plastic cement does not work!). It's strongly recommended, to use a primer for resin parts (use primer for enamel paints, e.g. Tamiya Surface Primer or similar). Use primer carefully, too avoid covering the fine screws and surface details.



Finally the completed rims have to be glued to the axles. The described procedure does not consider movable wheels any more. However, your Stralis model has now genuine hubs for the rear axle.

Enjoy!

Copyright CP MODEL.ART, 2016

cpmodelart.wordpress.com
cpulmhobby@gmx.de

All Resin parts are protected by copyright and must not be copied and given to 3rd parties against payment. The instruction sheet and all its contents are also copyright protected, but can be given to 3rd parties, if free of charge.